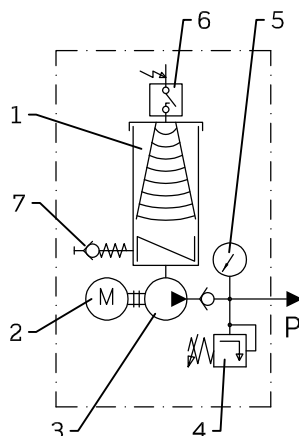


1. Tank
 2. Electric motor
 3. Piston pump
 4. Outlet pressure limiting valve
 5. Pressure gauge
 6. Level switch
 7. Tank refilling connection
 8. Base plate
- P Pressure outlet



GF33

Technical data

Piston pump
 Lubricant..... Mineral or synthetic oil (> ISO VG100)
 up to NLGI2
 Working temperature..... +10°C ÷ +80°C
 Working pressure..... 250 bar
 Maximum pressure.....350 bar
 Flow:

Ratio	Flow*
1:50	1,8 litres/hour
1:30	3 litres/hour
1:12	7,5 litres/hour

*NLGI-2 at 20°C

Electric motor

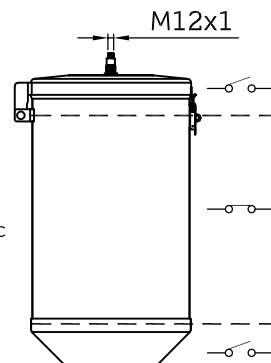
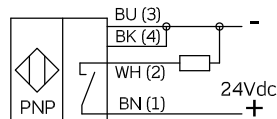
50 Hz 230/400 V ΔY 0,37 kW 1,79/1,03 A 1385/min
 60 Hz 460 V Y 0,43 kW 1,09 A 1685/min

Tanks

2 - 4 - 7 - 10 - 20 - 25 - 30 kg in stainless steel
 40 - 60 kg steel with cataphoretic coating

Ultrasonic level switch

For controlling minimum and maximum level



Contact form..... PNP NA
 Connector (not included)..... M12x1 5 pin
 Voltage..... 10...28VDC
 Max breakdown power..... 100mA
 Protection degree..... IP67

GF33 / X - 1 / X - X - X X - X

Lubricant	X	Drive system	X	Flow litres/hour	X	Tank	X	Level switch	X	Base-plate	X
Oil	A	Free shaft	0	1,8	5	Without	0	Without	0	Withouth	0
Grease (with grease stirring and grease pusher)	B	Without electric motor Flange Ø105 + coupling	1	3,0	3	2 kg AISI	1A	With	5	With base plate	1
						4 kg AISI	2A				
						7 kg AISI	3A				
						10 kg AISI	4A				
						20 kg AISI	5A				
						25 kg AISI	6A				
						30 kg AISI	7A				
40 kg steel	8										
60 kg steel	9										
		With electric motor	3							Under request a master progressive distributor can be mounted on the base plate	

Dimensions (mm)

